



E Series Calibration Kit

E TEST-PRE Calibration Kit

Precise , Durable

Coaxial mechanical Calibration kit is widely used in the VNA calibration and test, it is composed by a series of open-kit, short-kit and load.

Precise

Ideal connection interface, excellent electrical performance

Reliable

The test port made by stainless steel extends the service life. Under typical conditions, the calibration kit can be used over 2000 times, which is far more than the 500-times standard by IEC and MIL

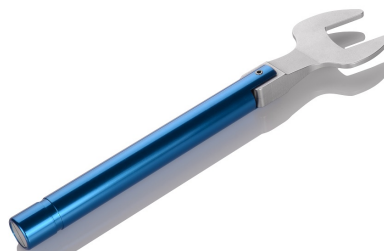
Confidence

Crafted details bring perfect use experience.
Advanced standard calibration during manufactory,
Ensured customer-confidence in each calibration and test.



Selection Guide

P/N	Type	Connector	Freq. (GHz)	Specification	Mating Cycles (times)	Coupling Torque (Nm)	Open-end Wrench size (mm)
ETES-PRE-NM-O-06 ETES PRE NF O 06	Open	N-M N F	6	Phase deviation : $\leq \pm 0.6^\circ$	>3000	1.3~1.7	19
ETES-PRE-NM-S-06 ETES PRE NF S 06	Short	N-M N-F	6	Phase deviation : $\leq \pm 0.6^\circ$	>3000	1.3~1.7	19
ETES-PRE-NM-L-06 ETES PRE NF L 06	Load	N-M N F	6	VSWR ≤ 1.025	>3000	1.3~1.7	19
ETES-PRE-NM-O-09 ETES PRE NF O 09	Open	N-M N F	9	Phase deviation : $\leq \pm 0.8^\circ$	>3000	1.3~1.7	19
ETES-PRE-NM-S-09 ETES-PRE-NF-S-09	Short	N-M N-F	9	Phase deviation : $\leq \pm 0.8^\circ$	>3000	1.3~1.7	19
ETES-PRE-NM-L-09 ETES-PRE-NF-L-09	Load	N-M N-F	9	VSWR ≤ 1.032	>3000	1.3~1.7	19
ETES-PRE-35M-O-06 ETES PRE 35F O 06	Open	3.5-M 3.5 F	6	Phase deviation : $\leq \pm 0.6^\circ$	>2000	0.8~1.1	8
ETES-PRE-35M-S-06 ETES PRE 35F S 06	Short	3.5-M 3.5 F	6	Phase deviation : $\leq \pm 0.6^\circ$	>2000	0.8~1.1	8
ETES-PRE-35M-L-06 ETES-PRE-35M-L-06	Load	3.5-M 3.5-F	6	VSWR ≤ 1.025	>2000	0.8~1.1	8
ETES PRE 35M O 09 ETES PRE 35F O 09	Open	3.5 M 3.5 F	9	Phase deviation : $\leq \pm 0.8^\circ$	>2000	0.8~1.1	8
ETES-PRE-35M-S-09 ETES PRE 35F S 09	Short	3.5-M 3.5 F	9	Phase deviation : $\leq \pm 0.8^\circ$	>2000	0.8~1.1	8
ETES PRE 35M L 09 ETES-PRE-35F-L-09	Load	3.5 M 3.5-F	9	VSWR ≤ 1.032	>2000	0.8~1.1	8



- * Type N Open end Wrench size 19mm, Coupling torque 1.35Nm(12in.lbs). Coupling torque is customizable.
- ** Type- 3.5mm Open-end Wrench size 8mm, open-end, Coupling torque 0.9Nm(8in.lbs) Coupling torque is customizable.
- *** Phase deviation : relevant tolerance from standard phase

EATEST-ECO Calibration Kit

Stable , Economical

Suitable for production testing of various passive and active devices with scalar network analyzers (SNAs).



Selection Guide

P/N	Type	Connector	Freq. (GHz)	Specification	Mating cycles (times)	Coupling torque (Nm)	Open-end wrench size (mm)
ETES-ECO-NM-O-03	Open	N-M	3	Phase deviation : $\leq \pm 0.8^\circ$	>3000	1.3~1.7	19
ETES-ECO-NF-O-03		N-F					
ETES ECO NM S 03	Short	N M	3	Phase deviation : $\leq \pm 0.8^\circ$	>3000	1.3~1.7	19
ETES-ECO-NF-S-03		N-F					
ETES ECO NM L 03	Load	N M	3	VSWR \leq 1.02	>3000	1.3~1.7	19
ETES-ECO-NF-L-03		N-F					
ETES ECO NM O 06	Open	N-M	6	Phase deviation : $\leq \pm 1^\circ$	>3000	1.3~1.7	19
ETES-ECO-NF-O-06		N-F					
ETES ECO NM S 06	Short	N M	6	Phase deviation : $\leq \pm 1^\circ$	>3000	1.3~1.7	19
ETES-ECO-NF-S-06		N-F					
ETES-ECO-NM-L-06	Load	N-M	6	VSWR \leq 1.035	>3000	1.3~1.7	19
ETES ECO NF L 06		N F					
ETES-ECO-35M-O-03	Open	3.5-M	3	Phase deviation : $\leq \pm 0.8^\circ$	>2000	0.8~1.1	8
ETES ECO 35F O 03		3.5 F					
ETES-ECO-35M-S-03	Short	3.5-M	3	Phase deviation : $\leq \pm 0.8^\circ$	>2000	0.8~1.1	8
ETES ECO 35F S 03		3.5 F					
ETES-ECO-35M-L-03	Load	3.5-M	3	VSWR \leq 1.02	>2000	0.8~1.1	8
ETES-ECO-35F-L-03		3.5-F					
ETES ECO 35M O 06	Open	3.5 M	6	Phase deviation : $\leq \pm 1^\circ$	>2000	0.8~1.1	8
ETES-ECO-35F-O-06		3.5-F					
ETES ECO 35M S 06	Short	3.5 M	6	Phase deviation : $\leq \pm 1^\circ$	>2000	0.8~1.1	8
ETES-ECO-35F-S-06		3.5-F					
ETES-ECO-35M-L-06	Load	3.5-M	6	VSWR \leq 1.035	>2000	0.8~1.1	8
ETES ECO 35F L 06		3.5 F					



Integrated Calibration Kit

Portable

Integrated calibration kit is mechanically integrated by single calibration kit, also known as Type T calibration kit.

Suitable for outdoor application and engineering test

Maximum operating frequency up to 9GHz(characteristic impedance $50\ \Omega$), Type N connector.



Selection Guide

P/N	Type	Connector	Freq. (GHz)	Specification	Mating cycles (times)	Coupling torque (Nm)	Open-end wrench size (mm)
EINT-NM-O-04	Open	N M	4	Phase deviation : $\leq \pm 0.6^\circ$	>3000	1.3~1.7	19
EINT-NF-O-04		N-F					
EINT NM S 04	Short	N M	4	Phase deviation : $\leq \pm 0.6^\circ$	>3000	1.3~1.7	19
EINT-NF-S-04		N-F					
EINT NF L 04	Load	N M	4	VSWR ≤ 1.025	>3000	1.3~1.7	19
EINT-NF-L-04		N-F					
EINT-NM-O-06	Open	N-M	6	Phase deviation : $\leq \pm 0.8^\circ$	>3000	1.3~1.7	19
EINT-NF-O-06		N-F					
EINT-NM-S-06	Short	N-M	6	Phase deviation : $\leq \pm 0.8^\circ$	>3000	1.3~1.7	19
EINT NF S 06		N F					
EINT-NF-L-06	Load	N-M	6	VSWR ≤ 1.032	>3000	1.3~1.7	19
EINT NF L 06		N F					
EINT-NM-O-09	Open	N-M	9	Phase deviation : $\leq \pm 0.8^\circ$	>3000	1.3~1.7	19
EINT NF O 09		N F					
EINT-NM-S-09	Short	N-M	9	Phase deviation : $\leq \pm 0.8^\circ$	>3000	1.3~1.7	19
EINT-NF-S-09		N-F					
EINT NF L 09	Load	N M	9	VSWR ≤ 1.032	>3000	1.3~1.7	19
EINT-NF-L-09		N-F					